



Traffic Commission Staff Report

August 01, 2011

REQUEST: Restricted Parking on one side of Orr Drive

LOCATION: Orr Drive (Sunset Park Neighborhood Association)

RECOMMENDATION: Approval of No Parking on one side of Orr Drive

BACKGROUND:

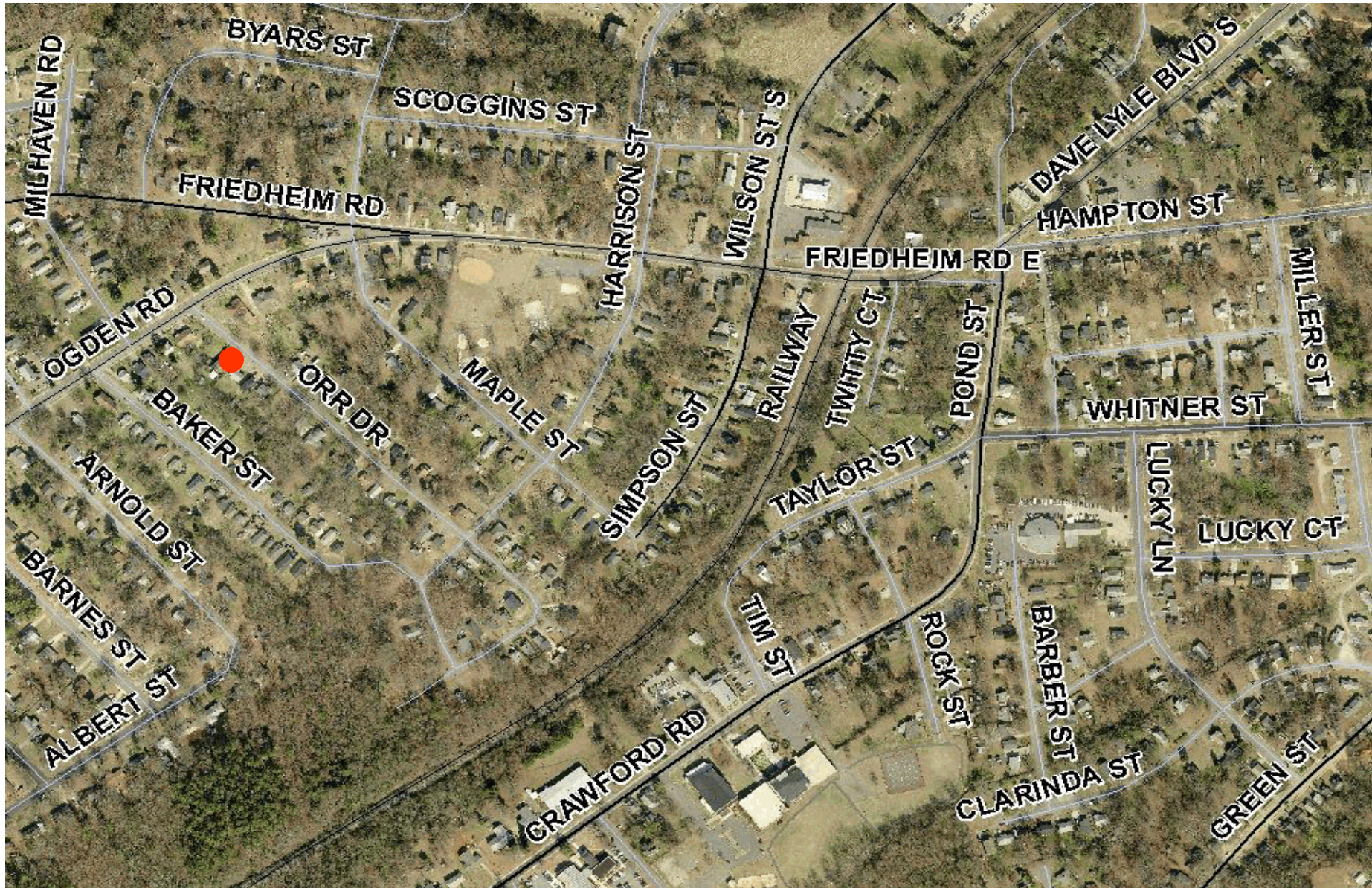
A request has been received from residents of the Sunset Park Neighborhood Association to restrict parking on one side of Orr Drive. This street serves a low volume, but high density housing environment. In recent years, residents have grown increasingly concerned about the large volume of vehicles frequently parking along a particular stretch of Orr Drive approaching Ogden Road – the primary connector road into this community.

In response to these concerns, staff have conducted a field review of the area and would note the potential adverse impact to pedestrian safety and roadway functionality (i.e., maintaining sufficient access for the provision of public services – fire, ambulance, trash, etc.) during high volume parking periods – which typically occurs Thursday through Sunday.

Therefore, at its regular meeting of July 28, 2011, the Traffic Commission voted unanimously to recommend that parking being restricted on one side of Orr Drive approaching Ogden Road **as reflected in the attached map**. I would note that the affected property owner (731 Ogden Road) is strongly supportive of this action.

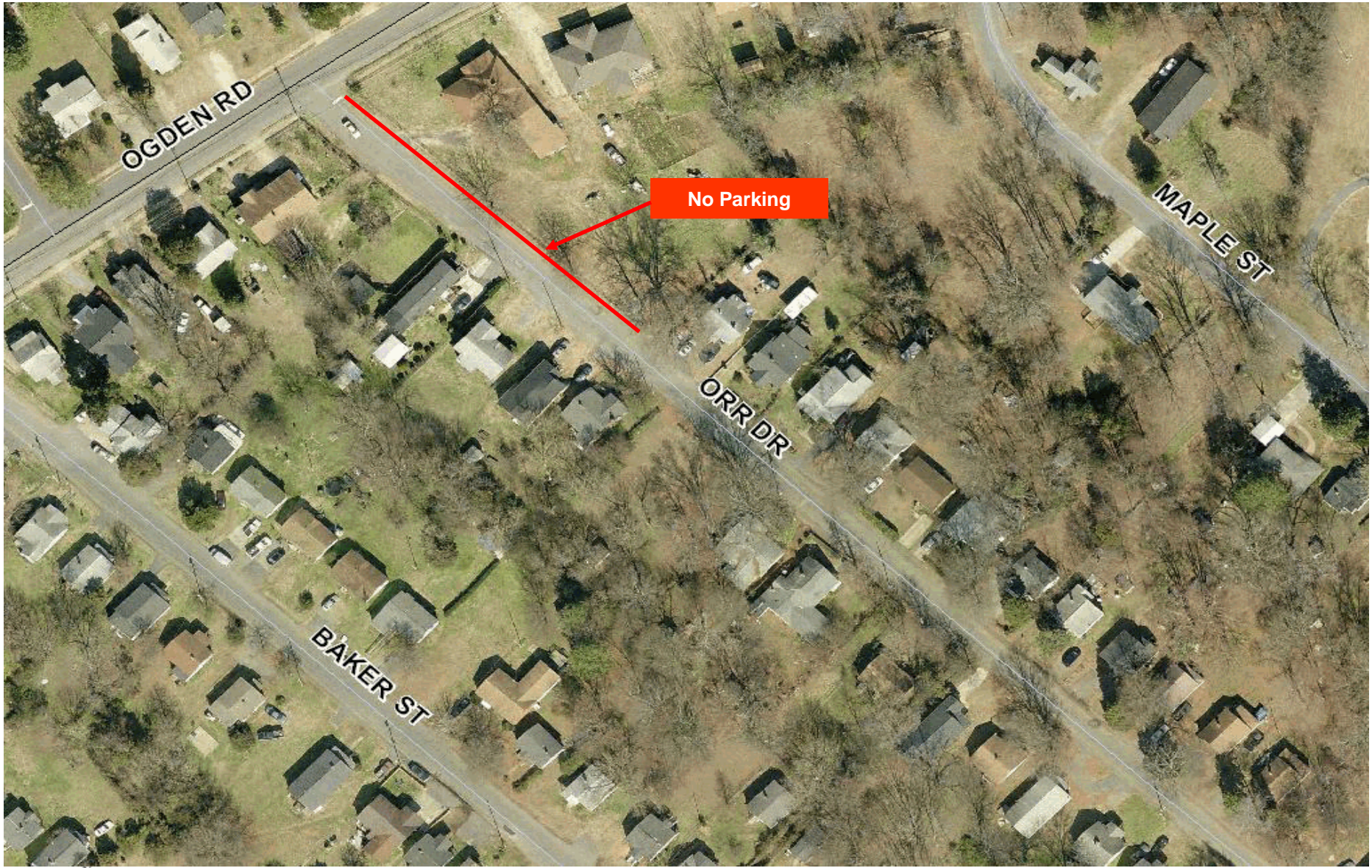
RECOMMENDATION: The Traffic Commission recommends that the Rock Hill City Council approve the request to restrict parking on one side of Orr Drive approaching Ogden Road.

ORR DRIVE



August 1, 2011

ORR DRIVE



August 1, 2011